



2035 Sustainable Mobility Plan

Public Workshop

August 2009



Hinesville Area Metropolitan Planning Organization

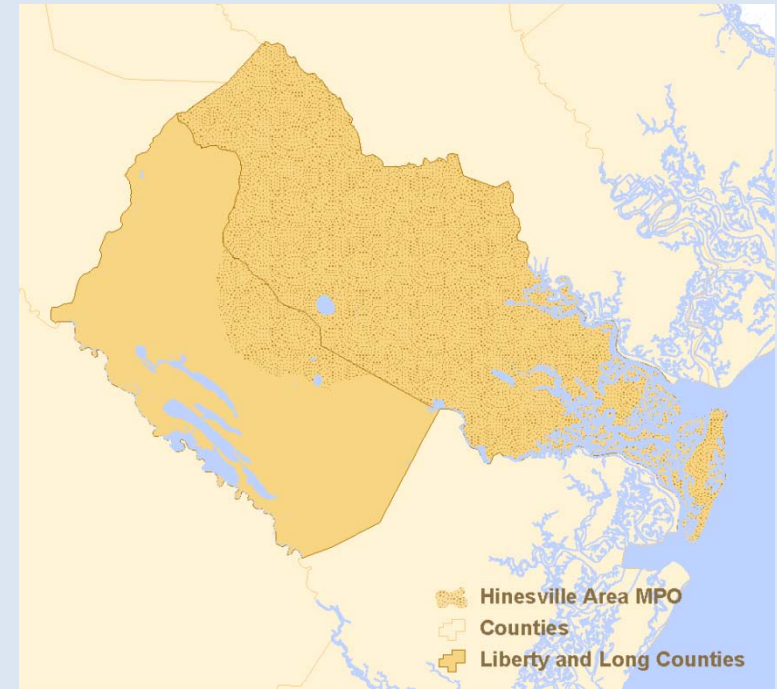
RS&H Team

Agenda

- Scope of Sustainable Mobility Plan
- Plan Approach
- Schedule
- Your input
- Contact Information

Scope of Plan

- Required five-year update of Long Range Transportation Plan (LRTP)
 - 2035 horizon year
 - Hinesville Area MPO study area
 - Multimodal - movement of people and goods
 - Meets federal requirements
 - SAFETEA-LU transportation legislation
 - Title VI of the Civil Rights Act
- Required annual update of near term plan, TIP, for 2010-2013



Scope of Plan (continued)

- Coordination
 - Growth Management Partnership
 - Transportation plans
 - CORE MPO, Bryan CTP, Wayne CTP
 - Comprehensive Plans

Federal Planning Factors

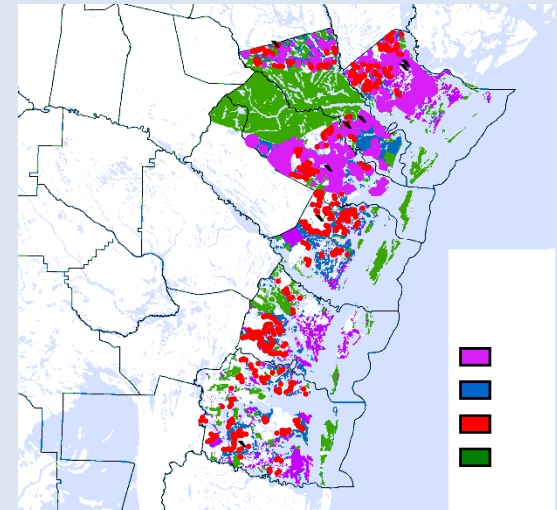
- Economic vitality of the metropolitan area;
- Safety of the transportation system for motorized and non-motorized users;
- Security of the transportation system for motorized and non-motorized users;
- Accessibility and mobility of people and freight;
- Environment, energy conservation, quality of life, and consistency between transportation improvements and State and local planned growth and economic development patterns;
- Integration and connectivity of the transportation system, across and between modes, for people and freight;
- Efficient system management and operation; and
- Preservation of the existing transportation system.

Approach

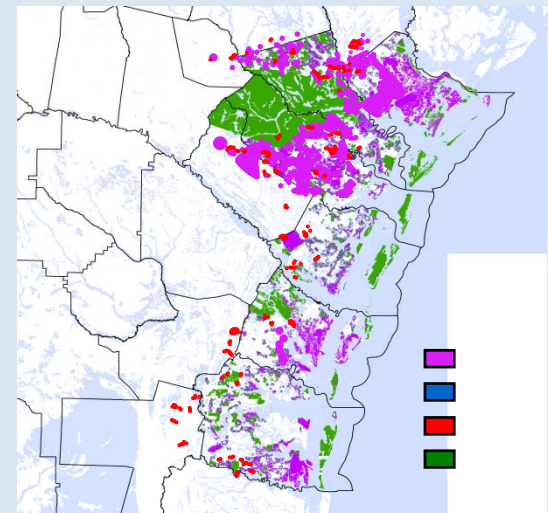
- Scenarios
- Sectors
- Corridors
- Public Participation

Approach

- Scenarios
 - What might happen?
 - What do we want to happen?
 - Big picture of long term growth

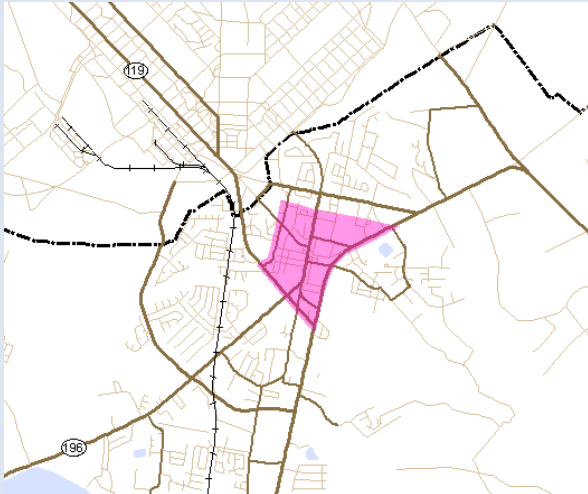


Sample Scenario Graphic

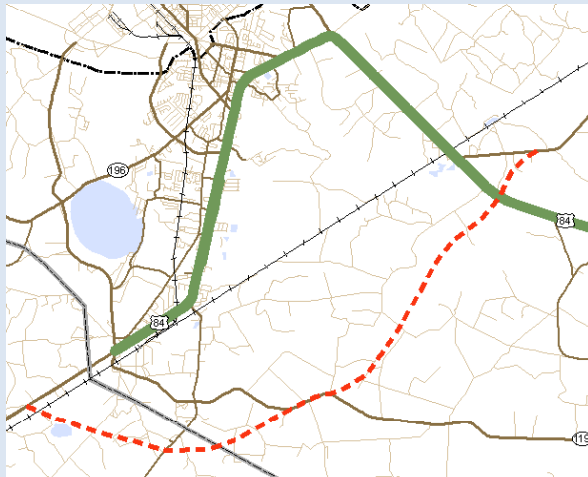


Sample Scenario Graphic

Approach



Sample Sector Area



Sample Corridors

- Sectors
 - Small areas
 - Land use and transportation
 - Policy and project recommendations
- Corridors
 - Major routes
 - Land use and transportation
 - Policy and project recommendations

Public Participation

- Stakeholders Advisory Committee
- Public meetings
 - Three rounds
 - Hinesville, Midway, Ludowici
- Information outlets
- Website www.thelcpc.org
- Speakers bureau
- Media

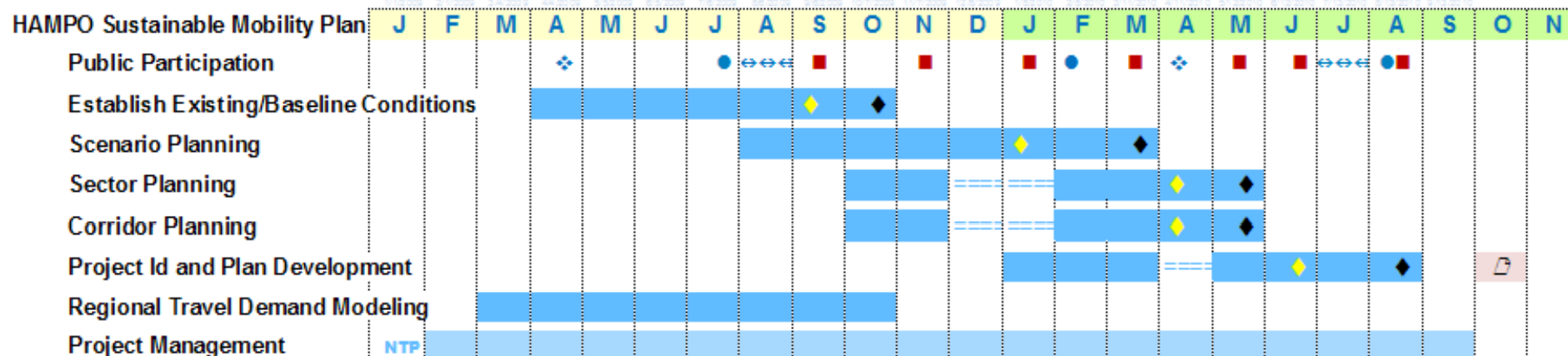


If you would like
a presentation to
your group,
please contact
Rachel Hatcher at
408-2030

Schedule - Target Dates

- Public meetings August 2009
- Existing conditions October 2009
- Scenarios defined October 2009
- Corridor/ Sector recommendations April 2010
- Draft plan complete July 2010
- Final plan adoption August 2010
- Plan due October 19, 2010

Schedule - Overview



Legend

- ◆ Draft deliverable (Per GDOT, Draft plan due 7/28/10)
- ◆ Final deliverable (Per GDOT, Final Plan due 10/19/10)
- ❖ Liberty County Workshop/Retreat
- Public workshop (three)
- Stakeholder Advisory Committee
- ↔↔↔ Public Comment period (30-days)
- 📅 L RTP due October 19, 2010

We need your input

- 2035 vision for the study area
- Sustainable Mobility Plan goals
- Transportation issues
- Future development scenarios

HAMPO 2035 Sustainable Mobility Plan
Public Meeting Round One

DRAFT VISION FOR PUBLIC COMMENT

The HAMPO study area includes portions of Liberty and Long Counties in coastal Georgia. This 2035 Sustainable Mobility Plan supports the long term vision for the HAMPO area as described in previous documents as follows:

The vision of Coastal Georgia is to be a unique and cohesive region based upon innovation and

HAMPO 2035 Sustainable Mobility Plan
Public Meeting Round One

PLEASE RESPOND TO THE QUESTIONS BELOW.

Where do you live?

☐ Allenhurst

☐ Walthourville

**Please
complete
front and
back of
forms**

OUR SUSTAINABLE MOBILITY PLAN IS A JOINT EFFORT BETWEEN TRANSPORTATION AGENCIES, CITY AND COUNTY GOVERNMENTS, THE DEPARTMENT OF
EDUCATION, THE WATER DEPARTMENT, AND OTHER PUBLIC SERVICE PROVIDERS

☐ Excellent ☐ Good ☐ Fair ☐ Poor

2035 Sustainable Mobility Plan

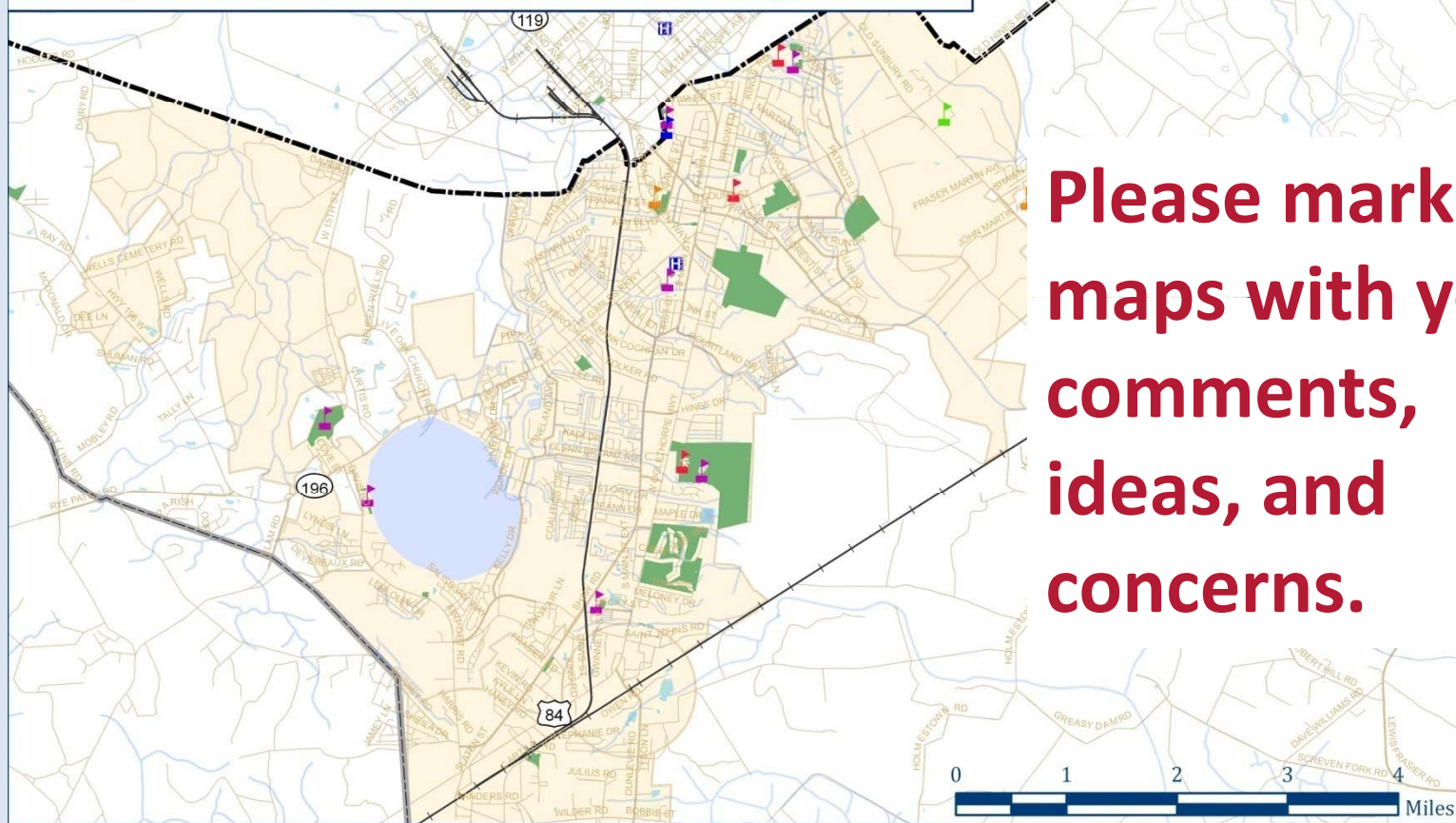
1

We need your input

- To receive future updates on the plan, please email whitney.shephard@rsandh.com with “LRTP” in the subject line.

We need your input

Walking and Bicycling: Comments, concerns, and opportunities



Please mark up maps with your comments, ideas, and concerns.

Please give us your feedback on the roads, sidewalks, paths, or trails that you travel

- | | | |
|----------------------------|-------------------|-----------------|
| Parks | Pre School | Railroad |
| Hydrology | Elementary School | Cities |
| Middle; Middle-High School | High School | Fort Stewart |
| College | | County Boundary |

2035 Sustainable Mobility Plan



Draft as of
07/27/09

RS&H Team

Source: US Census Bureau, Hinesville GIS Office, GDOT, RS&H



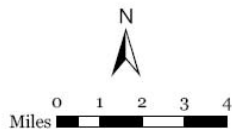
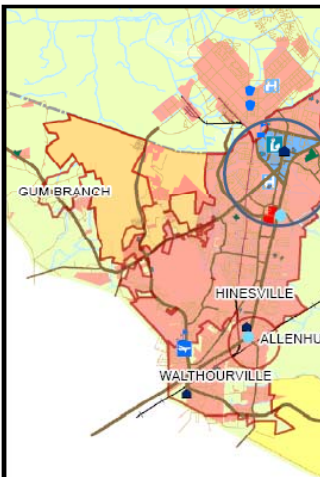
Future Development Scenarios

Long County Future Land Use

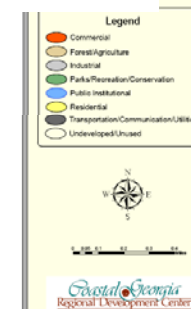
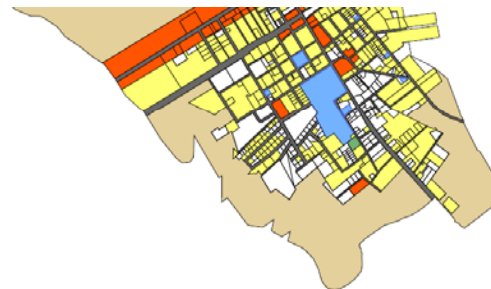
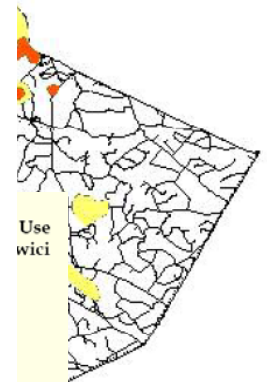


Future De

Let us know where
transportation investments
should support areas to be
preserved, developed, or
redeveloped.



Source: HAMPO, Hinesville GIS Office, RS&H
Draft as of June 2008



Contact Information

Thank you.

Rachel Hatcher, LCPC Transportation and Land Use Planner

Sonny Timmerman, LCPC Executive Director

912-408-2030

Whitney Shephard, RS&H

912-236-5311

www.thelcpc.org

